

Static Eliminator IMEI

Please read this User's Manual carefully before using the product to ensure safe operation.

1. Safety Precautions

Warning

If the power cable is not handled properly, there is a danger of fire or electric shock.

- Do not use power cables other than attached.
- Do not touch the power plug with a wet hand.
- Do not place anything on the power cable.

Do not remove the cover.

- There is a risk of electric shock and serious injury because of the high voltage inside.

Stop using immediately in the following cases.

- If water or chemicals flow into the unit.
- If there are metal or flammable items inside.
- If it seems a malfunction or an abnormality.
- If there is odor or smoke.

Turn off the power, unplug the power cable, and contact your dealer or our Service Department.

Do not disassemble, repair, or modify the product in any way.

- If you need repair, please contact your dealer or our service department.

2. Precautions for use

Caution

You may feel a slight electric shock near the ion outlet of the main unit. Please do not touch the outlet while it is in use.

When connecting the power cable, keep the following in mind.

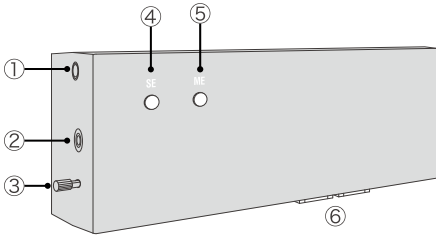
- Plug the power cable securely into a robust electrical outlet.
- Make sure there are no unreasonable bends in the cable.

For daily cleaning, wipe with water and then wipe with a dry cloth.

- Do not use solvents such as thinner.

3. Names of parts and their functions

Static Eliminator IME1



① Holder mounting screw

Attach the dedicated holder HLD1 (sold separately). Commercially available stands with 1/4 Unified screw are also usable.

② DC12V input terminal

Connect the AC adapter. Be sure to use the supplied AC adapter.

③ Earth terminal

Terminal for grounding the main unit

④ Static elimination button

Press the button to start static elimination and the green LED will light up. Press again to stop.

⑤ Demagnetization button

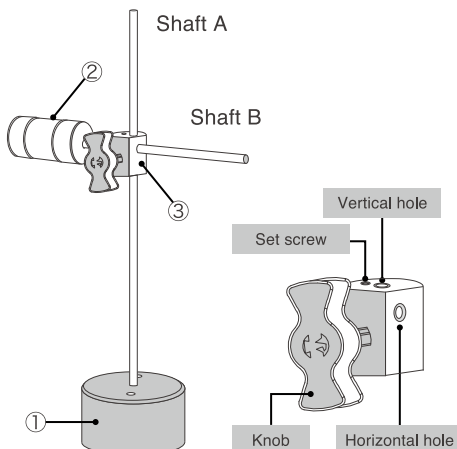
Press the button to start demagnetization and the red LED will light up. A buzzer sounds during operation, and the unit turns off automatically after 12 seconds.

⑥ Ion outlet

The two outlets emit + and - ions. You may feel a slight electric shock. Please do not touch outlets while it is in use.

Depending on the operating environment, dust may adhere to the needle of the ion generator. If it does, remove it from the ion outlet with an air duster or fine brush. At this time, please be careful not to bend the needle of the ion generator.

Dedicated Holder HLD1 (Sold separately)



① Base and shaft A

The base to support IME1 and the shaft to move IME1 up and down. The base can be fixed with screws.

② Balancer and shaft B

The weight to balance IME1 and the shaft to move IME1 left and right and adjust its angle.

③ Moving screw

Adjust the position of IME1. Fix the shaft A with the knob and the shaft B with the set screw.

4. Installation and Connection

Installation of IME1 and HLD1

Attach the IME1 and holder HLD1. (sold separately, if purchased)

(1) Fixing of shaft A and moving screw

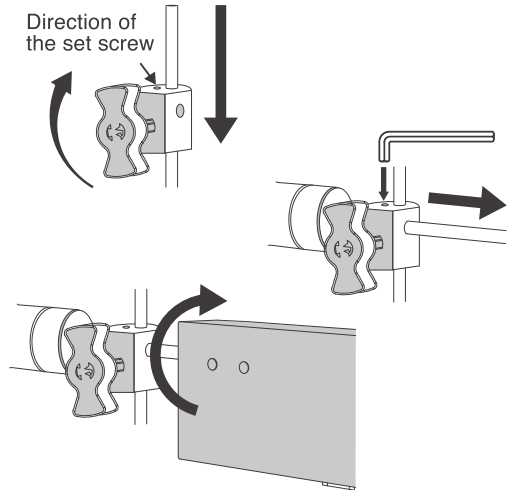
Pass shaft A through the vertical hole of the moving screw, and turn the knob at the appropriate height to secure it. At this time, make sure that the set screw is facing up.

(2) Fixing of shaft B and moving screw

Pass shaft B through the horizontal hole of the moving screw, and turn the set screw with an Allen wrench at the appropriate length to secure it.

(3) Installation of IME1

Turn the tip of shaft B into the screw hole of IME1 to fix IME1 and HLD1. Connect the AC adapter to the IME1 and plug it into an electrical outlet.



5. How to use

1. Static elimination function

(1) Adjustment of the position

Position the platter so that the two ion outlets are located at the upper left of the platter, on a straight line 45° from the center of the record.

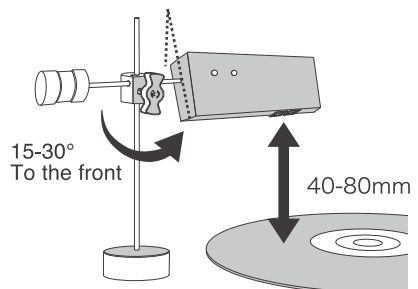
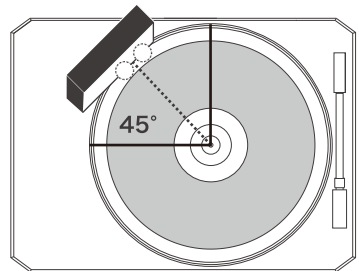
(2) Adjustment of height and angle

Loosen the knob of HLD1, adjust the ion outlet to be 40-80mm height from the record, and turn the knob to fix it. Loosen the set screw, adjust the angle of the ion outlet so that it is $15-30^\circ$ in front, and turn the set screw to fix it.

(3) Start of use

Press the static elimination button, rotate the record, lower the cartridge, and start playback. During playback, the IME1 is constantly activated to suppress frictional charging.

- The effect may vary depending on the temperature and humidity, the material of the record, and the turntable sheet.
- It can also be used for static elimination of CDs.



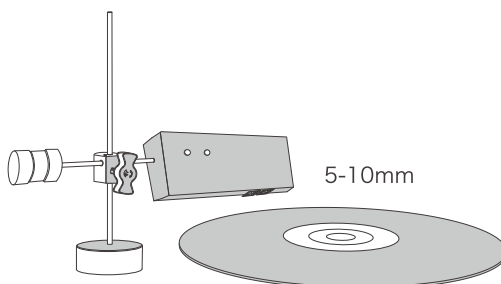
2. Demagnetization function

(1) Adjustment of height

Loosen the knob on the HLD1 and adjust the ion outlet to a height of 5-10mm from the record, then turn the knob to secure. (You can also hold the HLD1 by hand and move it closer to the record without adjusting the height.)

(2) Start of use

Rotate the record and press the demagnetization button. During operation, a buzzer sounds and a decaying magnetic field is generated from near the ion outlet. 12 seconds later, the power is automatically turned off.



- It can also be used for demagnetization of CDs.

6. Product Specifications

Model	IME1
Configuration	Main unit and AC Adapter
< Static Elimination >	
Method	Ion Blowing
Time	30 sec or less (Until drops below 50 V)
< Demagnetization >	
Method	Damping field
Time	12 sec
Power Supply	DC12 V 0.5 A, 100-240 V
Installation	By UNF1/4 Screw holes

Dimensions	155W×62H×43D mm
Weight	320 g
Accessories	AC adapter

■ Holder HLD1(Sold separately)

Model	HLD1
Installation	Dedicated for IME1
Moving Range	Up/Down 220 mm Left/Right 80 mm
Weight	1.4 kg

7. After-sales Service

5-year quality warranty

- All products will be repaired free of charge for five years if they fail under normal use in accordance with the user's manual. For details on the coverage and contents of the warranty, please refer to "Support" section of our website.
- Customers who have acquired our products as used products can take over the remaining warranty period as a second user. If you have acquired a used product, please register from the "Support" section of our website.
- If you have any questions about the product, please contact your dealer or our service department.

< Contact Us >

CS Port Co.,Ltd.

1-1-18 Nishinkanomachi, Toyama-city, Toyama, 939-8084, JAPAN

Service Department [Office Hours] Weekdays 9:00-18:00

Phone: +81-76-461-4188

Email: service@csport.audio

WEB: www.csport.audio/en/inquiry

UME-IM/R3DEC